



# Bowspritz



Newsletter of the Port Jefferson Yacht Club

On the web at: <http://www.portjeffersonyachtclub.com> June 2020

## COMMODORES' COMMENTS

The Club is slowly but surely coming to life! Launches are running with hours to 11 PM. Transients are visiting our beautiful harbor. The club grounds are looking great and we plan to have a Junior Sail program this year.

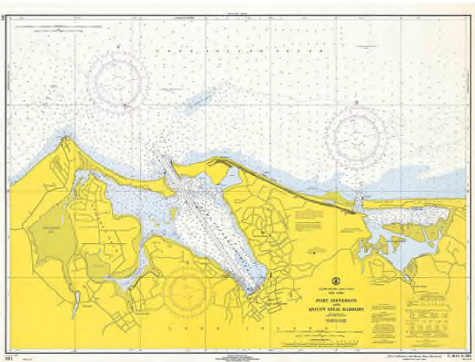
We all hear “We’re in this together” and that certainly applies to our membership. The board is doing their best to address events once held in April, May and June. We plan to hold these events in the coming months. The annual fishing tournament could not be held in May, the plan is to have a Snapper Tournament in August. The Commissioning will return. We are looking at a date in July. More to come on that and the format so as many members can participate. Racing in on! Last week we had our first Tuesday night race with a real squeaker finish. Red Sky by two seconds over RJMS! The Harbor Cup is on. We will have a race, but no after party. No entry fee! Commodore’s Cocktail Party and Cookout may be combined in one event. We are in the planning stages for this event.

We understand this has been frustrating situation for all and again we are doing our best to make this the most enjoyable year for all. We have eliminated the charge for ice to members this year. Since we are “all in this together” please limit usage to one bag per day, per boat so that there is plenty for all. Check out our new vending machines! We have an outside vendor keeping the machines well stocked and functional.

We are closely monitoring the State regulations and the phases for opening. Please continue to wear a face mask while on Club grounds and on the launches. It’s for the health of all our members and employees. I promise as soon as we move into phases that no longer require a mask when you cannot social distance we will do so. I received a lot of positive feedback from the email to members on Friday. I will do a better job at communicating with our members regularly to let you know our progress.

We are facing financial challenges today. With the virus impacting our Memorial Day transient count, mooring revenue is down but is beginning to recover. We are unsure of total revenue figures for the Junior Sail Program. Membership fees, mooring revenue and Junior Sail revenues are our largest sources of operating funds. We are asking all members to pay their dues and make use of the facilities and programs. As I said in my April article “**Hold Fast**”. We need to hold fast today for a club tomorrow.

Karl H. Janhsen  
(631)827-6651  
[kjanhsen@covatiandjanhsen.com](mailto:kjanhsen@covatiandjanhsen.com)



# **CLUB HOUSE, DOCK AND LAUNCH RULES IN RESPONSE TO COVID - 19**

1. At this time there is no use of the upper club house
2. Bar is closed until further notice
3. Rentals will begin once the curfew is lifted for such activities by New York State
4. Masks to be worn at all times while on club premises
5. Launches have been marked to show appropriate social distancing
6. Launch drivers have ultimate say in who may use launch. Number of passengers is at their discretion. Please show proper respect to launch drivers at all times.
7. Launches to be completely disinfected at a minimum of once per day. Handrails and other touch points will be wiped down after each trip with appropriate disinfecting wipes.
8. If the JSP Rest Room is used by anyone there are disinfecting wipes that must be used to clean all surfaces before leaving the rest room. Use of JSP Rest Room for member and guest is at the discretion of the Launch Drivers.

## **Making a Difference**

To support our local community food bank, please make a donation to the following:

**Long Island Cares  
10 Davids Drive,  
Hauppague, NY 11788**

Thanks and stay well,

*Judy Suben*



# Rear Commodore's Comments

Well, June is here, the boats are in the water and mooring field is full. The Tuesday night races have had a great turnout so far. Last Tuesday, we had at least nine boats out on the water. It's a little more challenging this year with all boats racing with only two crew members- very challenging when the two are family.

The club is looking for ideas for social events that can be done within the current guidelines. As things ease up and we get beyond the limit of 10 people per event we may look to hold some type of outdoor event. Any event ideas that you might have are welcomed. Other clubs in the area hold sunset cruises. With the long evenings that might be a great event to hold this month. But, you have to promise not to turn it into a race.

If anyone would **like to record their boat's performance during tomorrow's race there is a free app called Race Q's which you can download to your phone. Set up an account, enter your boat's info and press record a few minutes before the start. Later you can save and upload to play it back.** Playback is best on a laptop. You can see your performance relative to all the other boats that used the app.

<https://raceqs.com/>

Tim Rachek

## For Sale

**Instantly turn any mechanical winch into an electrical winch with this cordless drill.**

For Sale – Power winch handle by Milwaukee Tools – used only one season. (Selling boat)

Originally \$450 – Asking \$300.

Contact Ray Epp 631-8168659



## Docks and Floats June 2020

Our docks went in with out a hitch on May 16. The electric and water were hooked up the same day. This was the first year we ever limited the number of members working to launch the docks and it worked out great. The members that were scheduled to show up, did show up. Most of the members who came most had launch the docks before, so they knew what needed to be done. There was very little supervision, there were no make-work jobs and there was no confusion. We had a very successful day. One of the two pilings that the Board had voted on to be replaced, cracked off. Seven Seas Construction has replaced both of them. They are 45' Class B poles on the West dock.

We are still looking for a grant writer and time is running out. If anyone can help or suggest a non member, we really need help with this application for the Boating Infrastructure Grant. The BIG grant is specifically designed to increase the availability of transient dockage and 75% of the cost is grant money, FREE MONEY. We would get the benefit of increased revenue and greatly increase the space members can use on the docks. But, without the grant, it is ALL out of pocket.

The launch drivers are using Dockwa in new and different ways. Andrew Mathews designed a procedure and guide where moorings are pre-assigned and that information is sent to the boaters at their email addresses. With this information guests know their mooring number or dock assignment before entering the harbor.

### Work Hours

In 2020 so far we have worked only 87 hours on the docks with an additional 40 expected in the fall. This is only half of the usual number of hours worked. So, in view of the fact that the dock launching and hauling can be done with smaller crews, I suggest that members who in the past relied on the docks for work hours credit, should contact the Directors and the Board for other projects they can work on for work hours credit. Further, I suggest that you do this before the end of the summer or you will be paying.

Alan Johnson, Dir. Docks and Floats

## **For Sale**

400 lb Mooring setup complete with all accessories.

Professionally maintained by Murphy Marine and presently in storage in his yard .

Asking \$450. Call Ray Epp at 631 816 8659

## Director of Education

Our sailing program, like every other aspect of the club, has been severely impacted by the pandemic. However, James (our Director of Summer Sailing Programs), Danyte (our Assistant Director), and I are moving forward with a limited program that will still be of benefit to the kids and adults who want to get instruction. As of now, considering the need to get to Phase 4 of the state's plan, we expect the school to start on July 13<sup>th</sup> and continue until the week of August 21<sup>st</sup>. We will use the Optimists which are designed for single-handed use and the 420s for two-person crews from the same family (or similar pairings). We will follow all required guidelines like making sure that masks are worn when children and instructors are together, boats are sanitized regularly, etc.

We have also started scheduling adult and big-boat sailing in July using Jeremiah (our Hunter 31) based on requests we have already received. And, we will start the Monday night small-boat racing program (described elsewhere) on June 22<sup>nd</sup>. Please help us spread the word to anyone you think might be interested in any of these programs. Thank you.

We will be offering this Red Cross training in the near future at the yacht club. It is available to anyone interested for a fee of \$120. It will be given over a 6½ hour period on a day that needs to be scheduled soon. It will probably not be scheduled before the end of June. Please email or call me if you are interested or if you have any questions. Thank you.

David Diamond,  
Director, Education Programs  
632-513-6074

## Items for Sale

35 pound CQR anchor. Good condition. Asking \$150, which is much less expensive than a new one (over \$500). If you need a short piece of chain with it, I have some 3/8 chain I can include for free. Call or email Elliott (sv Senta) at 919-812-3975 cell, or [benenttguerrero@gmail.com](mailto:benenttguerrero@gmail.com)

Rave Sports Nighthawk 3-Person Towable Tube. Used fewer than 10 times. Very good condition. No leaks. Includes a tow rope. Asking \$150, which is much less expensive than a new one, e.g. \$300 at Dick's Sporting Goods (<https://www.dickssportinggoods.com/p/rave-sports-nighthawk-3-person-towable-tube-16rspunghthwkxxxxwsr/16rspunghthwkxxxxwsr>). This is a 3 rider, double decker, wing style tube and features a skim-fast bottom for a fast ride that offers great maneuverability. Foam handles with neoprene knuckle guards help you hang on tight as the Nighthawk whips back and forth across the water. An anti-chafe guard offers added protection. Holds 3 riders. Double decker swept wing style tube. Durable Nylon top cover. Heavy duty PVC bladder. Skim-fast bottom for a slick and fast ride. Anti-chafe guard. 6 foam-filled handles with neoprene knuckle guards. Quick connect tow point. Inflated dimensions: 73.5" x 77" x 25.5". Deflated dimensions: 77" x 80". Max combined rider weight: 510 lbs.

If interested call or email Elliott (sv Senta) at 919-812-3975 cell, or [benenttguerrero@gmail.com](mailto:benenttguerrero@gmail.com)





## Racing Begins!

### Tuesday Night Series

June 2<sup>nd</sup> saw our first race of the season! 10 boats came out to race, all racing single or double handed. In great conditions for a short-handed race, we saw some close competition, with Red Sky taking the win in the first division, followed by R JMS and Harvest Moon. And in the second division, Harmony took the win, followed by Circe and Whimsy!



We hope to see a few more folks join us as their boats go in!

### Harbor Cup is ON!

The Harbor cup will be held Saturday June 12<sup>th</sup> with first division warning at 1300.

And this year, there is NO CHARGE to register!

We will have short-handed (Single or Double hand) divisions, and will split the divisions to have fewer boats on the line at the starts. Good chance to try out racing!

See the club website racing pages for details and links to register!

Dave Hubbard

Fleet Captain

davechub@gmail.com

516-313-7617

# Small Boat Sailing

We have a fleet of 420s, a wonderful 13' fun boat with main and jib. Unfortunately, due to the pandemic, we may have limited use of them for the children's sailing program this year. The good news is that we can offer them to (launch) club members. Here are two options for taking advantage of this offer:

Option 1—You can rent one of the 420s from the middle of June until the middle of September. Your boat (only available to you) will be rigged and kept on the floating JSP dock where it will be available to you anytime. The fee will be \$375 for the season. We ask that you use the boat responsibly, including with respect to the pandemic.

Option 2— The second option makes the first option even more attractive. We will be running small-boat Monday night races using our “new” chase boat. There will be a fee of \$15 if you have your own boat (no fee for those who rent a 420 for the season), and we will also offer (sanitized) 420s for any club member to use for the evening for \$45—essentially \$30 for the boat and \$15 for participating in the race.

Think about these options and hurry to contact one of us and sign up before all the boats are taken..

.James Finke, Sailing Director, 631.805.3343

Danyte Reisinger, Asst. Sailing Director, 631.338.4454

## KAYAK WANTED

I am a PJYC member looking to purchase a single or tandem kayak

please contact me

Holly Hovis

973.886.2240

hkhovis@gmail.com

# FOR SALE: 2017 CATALINA 315

**Length Overall:** 9.49 m 31' - 11"

**Length of Hull :** 9.45 m 31' - 0"

**Length at Waterline:** 8.08 m 26' - 6"

**Beam:** 3.35m 11' - 7"

**Mast Height Above Waterline:** 14.70 m 48' - 3"

**Draft:** Wing Keel 1.32 m 4' - 4"

**Ballast:** Wing Keel 1,996 kg 4,400 lbs

**Approx. Basic Weight:** Wing Keel 4,808 kg 10,600 lbs

**Engine:** 3 Cylinder Diesel 16 kw 21 HP

**Total Water Capacity:** 155 ltr 41 gal

**Fuel Capacity:** 102 ltr 27 gal

**Holding Tank Capacity:** 64 ltr 17 gal

## Options Include:

Radar

Furling

Mast (Selden) with vertical battens

Removable Bow sprit/UPS Asymm reaching sail with Code X Furler and sheets

Raymarine eS97

Whisker Pole

Microwave

Folding Leather Wrap Wheel P70/Evolution

Wheel Pilot P 70 Display

Horizon VHF w/Ram in cockpit

Fusion MS-RA205 Marine Stereo system

Fitted Teak Cockpit grate

## Sail Area:

100% Foretriangle 47 sq. m. 506 sq. ft.

Standard 135% Genoa 54.72 sq. m. 589 sq. ft.



**CONTACT: Donald Mackenzie, 631-682-4127**

**DonMackenzie@Allstate.com**





SOCIALLY ACCEPTABLE

**We are doing the best that we can**

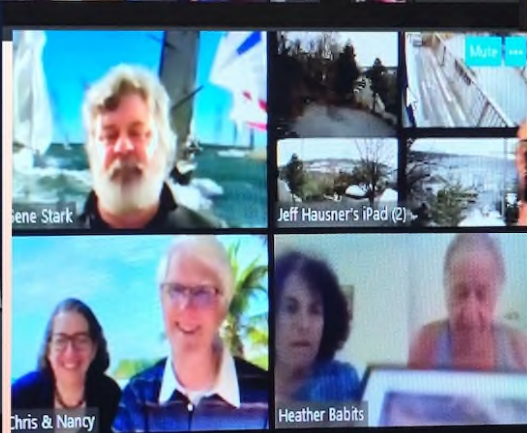


**We are complying with the New York  
State mandates. Please hang on.  
We will get through this together.**

*Your Social Director  
Karen Janhsen*



# April 24 Zoom Happy Hour



Hosted by  
Karen & Karl Janhsen



# May 8th PJYC Zoom Happy Hour



Hosted by Karen & Karl Janhsen



# May 29th PJYC Zoom Happy Hour



**As Social Director I've been doing virtual happy hours. Definitely the sign of the times. We are trying to comply by the New York State mandates. I have been talking to my social committee about planning different social events that will comply with the different phases of the New York state mandates. Hang tight we will all get through this together. Stay well and safe.**

*By: Karen Jarhson  
Social Director*

## BOARD OF GOVERNORS/COMMITTEES—2019

### **CLUB OFFICERS**

Commodore	Karl Jahnsen	631-473-57343	cjcpas@aol.com
Vice Commodore	Jeff Hausner	5161-459-352934	jwh@intellitec.net
Rear Commodore	Tim Rachek	631-751-8136	timrachek@optonline.net
Fleet Captain	David Hubbard	631-630-3913	davechub@gmail.com
Recording Secretary	Ellie Bowman	631-751-3591	bowman70@verizon.net
Corresponding Secretary	Kay Rachek	631-751-8136	kayrachek@optonline.net
Treasurer	Rich Spitzenberger	631-335-3777	rich@spitzenbergercpa.com
Judge Advocate	John Cirelli	631-838-1129	jciarelli@gmail.com

### **DIRECTORS**

Launch & Moorings	Ed Dowd	631-472-6533	dowdeddie.com
Docks & Floats	Alan Johnson	631-871-1219	alanwilliamjohnson@gmail.com
House	Kevin Mularkey	631-732-4397	jankev@optonline.net
Grounds	Mitch Slochower	631-828-6923	kpuls116@gmail.com
Social	Karen Jahnsen	631-473-5734	<a href="mailto:syckarenj@aol.com">syckarenj@aol.com</a>
Education	David Diamond	631-473-2473	davidjdiamond@optonline.net
Past Commodore	Ed Dowd	631-871-1219	dowdeddie@aol.com

### **COMMITTEES**

Membership (Chair)	Ralph Segalowitz	631-689-7395	rsegalow@yahoo.com
	Tim O'Mara	631-846-4177	chillinonahd@yahoo.com
	Joan Fortgang	631-473-2160	sailrmom@optimum.net
	Jean & John Doherty	631-751-8643	seapeace@live.com
	Ray Epp	631-289-4156	rwepp@optimum.net
Nominating (Chair)	Chuck Chiamonte	631-473-0205	chuck09@optonline.net
	Bob Bari	631-751-7330	ark@barisite.com
	Patty Broderick	516-818-6465	pattybrod@gmail.com
	Laurina Nielsen	631-827-0049	laurina_n@hotmail.com
	Sean Heffernan	631-751-6626	johnheffernan@optonline.net

### **SERVICES**

Cruising	Heather & Ken Babits	631-331-1798	raison10@optonline.net
PHRF	Joan & Mort Fortgang	631-473-2160	sailor36@optimum.net
Bowspritz	Vic Suben	631-246-5170	vsuben@optonline.net
E-Mail (mass)	Gene Stark	631-474-5187	email@portjeffersonyachtclub.com
Bar	Connie Siris	631-987-0249	pjycsiris@gmail.com
	Dianna Stackow	631-512-1068	ds@grms.com
Club Rentals	Kevin Mularkey	631-732-4397	jankev@optonline.net
Ships Store	jean & John Doherty	631-751-8643	seaeaglejld@hotmail.com
Yearbook	Dianna Stackow	631-689-6957	ds@grms.com
Harbor Cup	Sean Heffernan	631-751-6626	johnheffernan@optonline.net
Publicity	Joe Yorizzo	631-979-1794	unitedart@aol.com
Dingy Rack Rental s	Ray Epp	631 289-4156	rwepp@optimum.net
Work Assessments	Ellie Bowman	631987-8970	bowman70@verizon.net
Director, Sail Training	Joe Yorizzo	631-979-1794	unitedart@aol.com

Port Jefferson Yacht Club

PO Box 138

Port Jefferson, NY 11777

# Bowspritz

## **Upcoming Events**

**TBA**